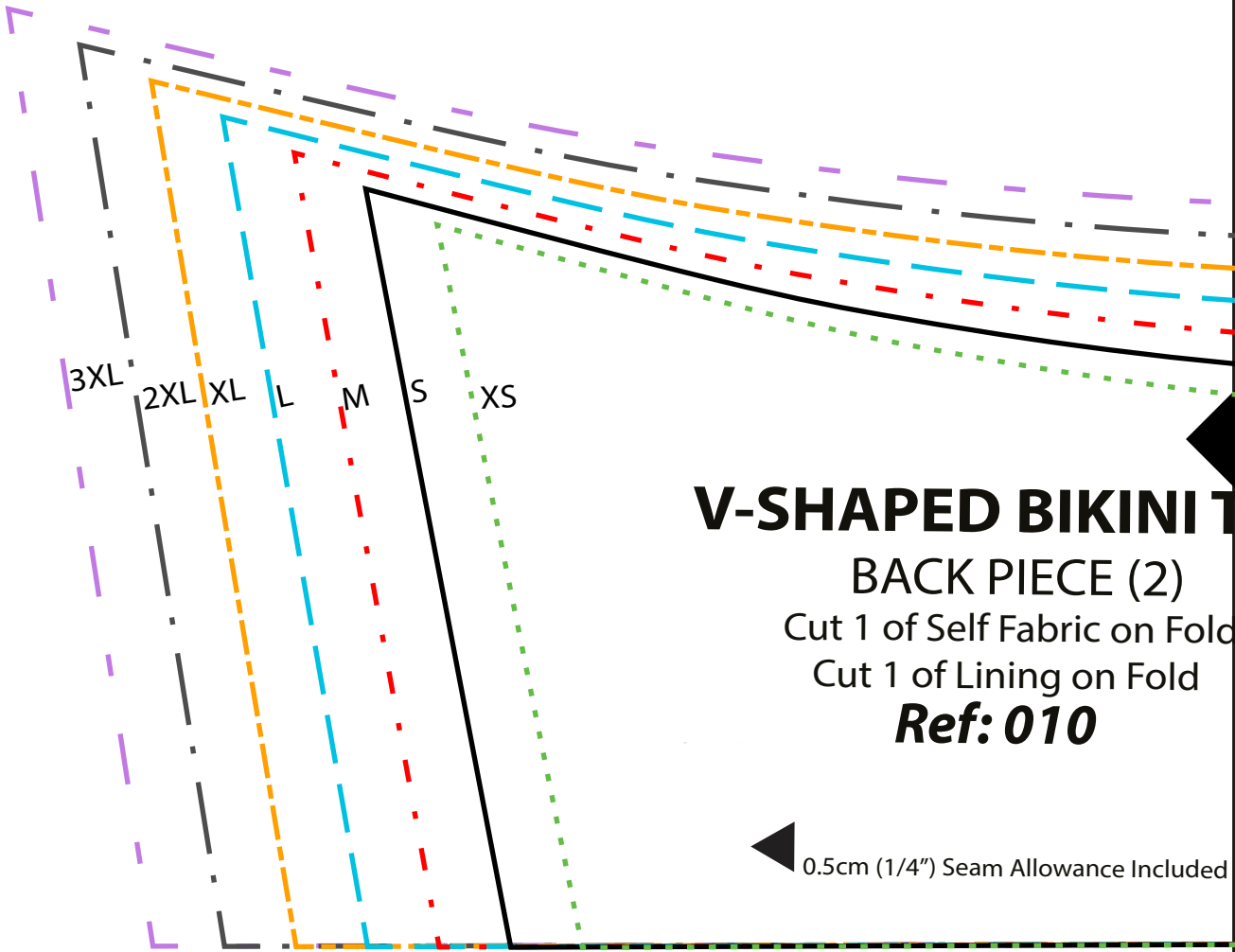
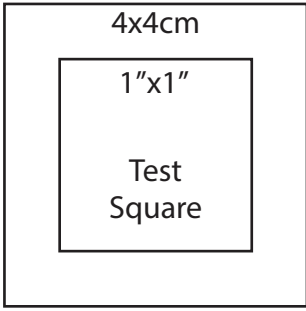
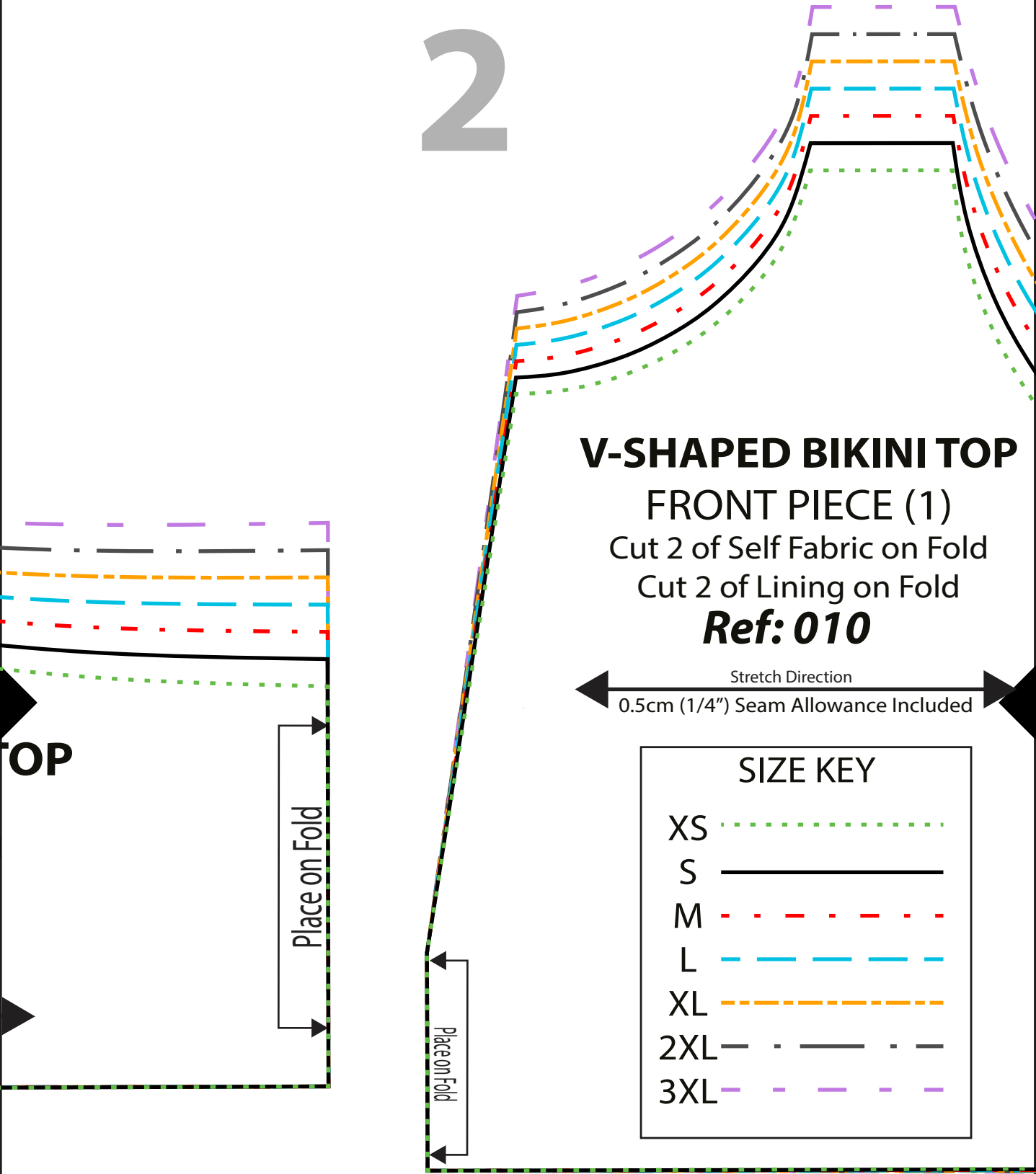


1



# 2



## V-SHAPED BIKINI TOP

FRONT PIECE (1)

Cut 2 of Self Fabric on Fold

Cut 2 of Lining on Fold

**Ref: 010**

Stretch Direction  
0.5cm (1/4") Seam Allowance Included

SIZE KEY	
XS	.....
S	————
M	- . - . - . - . - .
L	- - - - -
XL	- - - - -
2XL	- . - . - . - . - .
3XL	- - - - -

**BIKINI TOP STRAPS**  
ALL SIZES: Cut x2 Straps  
**Ref: 010**

Stretch Direction  
0.5cm (1/4") Seam Allowance Included

A

B

# 3

## BIKINI BOTTOMS ST

ALL SIZES: Cut x4 St

**Ref: 010**

Stretch Direction

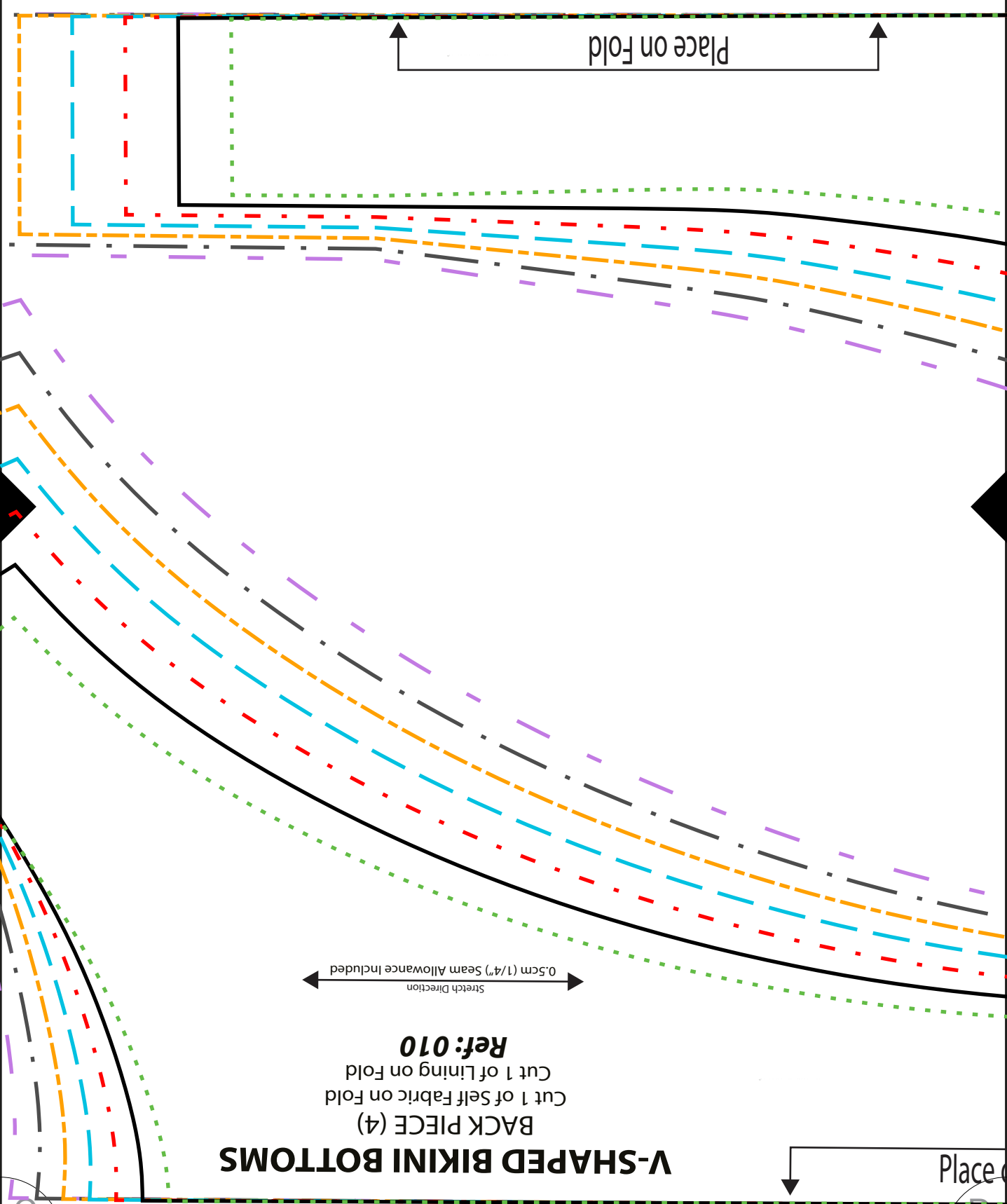
← 0.5cm (1/4") Seam Allowance In



B

C

TRAPS  
aps  
4  
cluded



**V-SHAPED BIKINI BOTTOMS**

**BACK PIECE (4)**  
**Ref: 010**  
Cut 1 of Self Fabric on Fold  
Cut 1 of Lining on Fold

0.5cm (1/4") Seam Allowance Included  
Stretch Direction

Place on Fold

Place on Fold

C

D

# 5

## V-SHAPED BIKINI BOTTOMS

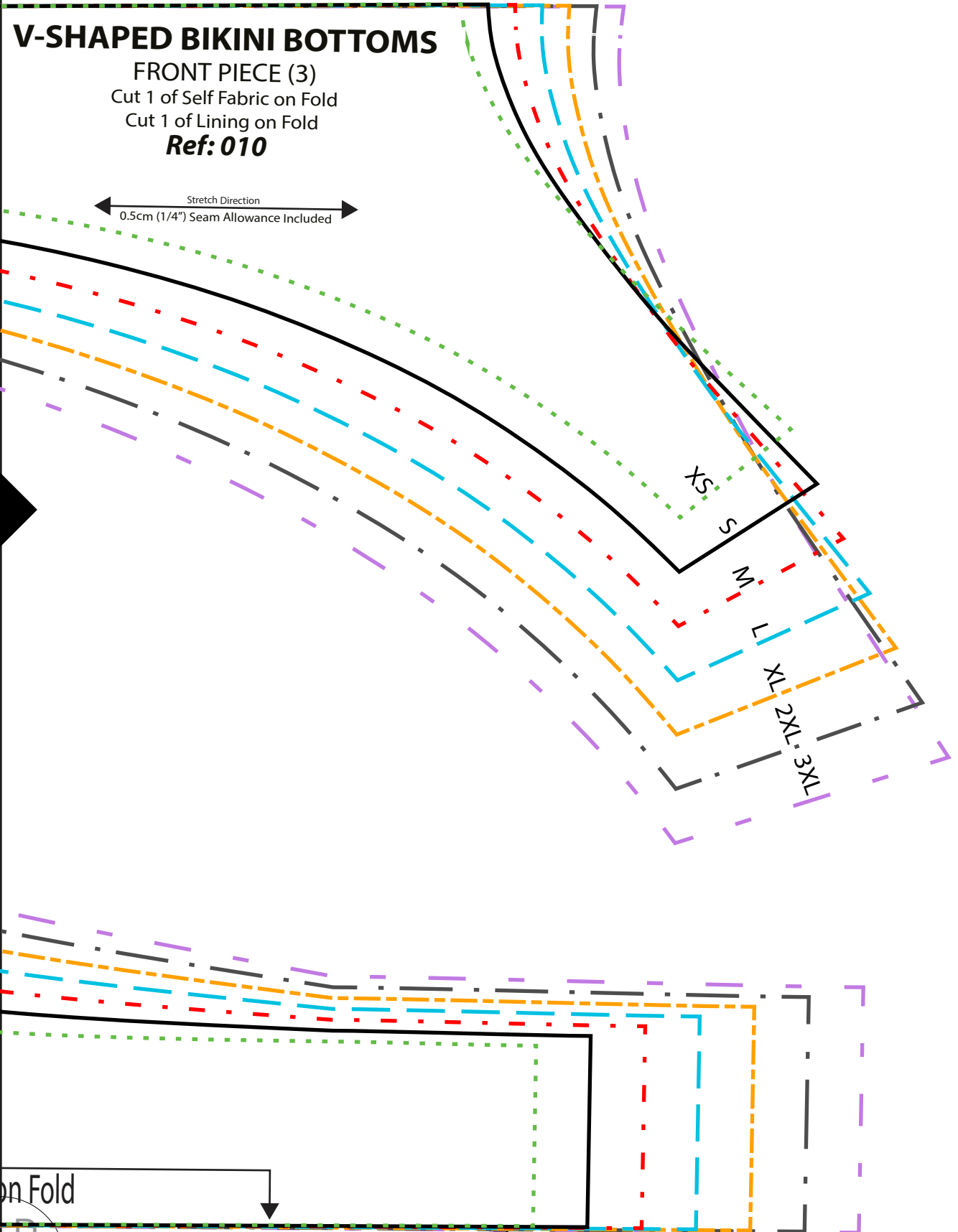
FRONT PIECE (3)

Cut 1 of Self Fabric on Fold

Cut 1 of Lining on Fold

**Ref: 010**

Stretch Direction  
0.5cm (1/4") Seam Allowance Included



on Fold

D